



GoodEarth
building sustainable communities

M^{malhar}itif

Rera No: PRM/KA/RERA/1251/310/PR/200922/005259



GoodEarth
building sustainable communities

At GoodEarth, our journey in building sustainable communities over more than 35 years, while being sensitive to the impact of our decisions on people, ecology and culture, is not just ours. But that of a community of skilled and talented people driven by ideas and passionate about achieving excellence in their respective craft.

Ours is a team of architects, designers, draftsmen, masons, craftsmen, and naturalists drawn together by an innate desire to create something out of the ordinary.

Creating quality spaces to provide a visual experience through design, emphasising craftsmen over material resources thus reviving traditional crafts and working with respect to the land are the pillars of GoodEarth.

From identifying land to envisioning its development, everything flows in an organic way. Sustainability at all levels and working in tune with nature dictates our larger philosophy and the communities we create are but an expression of it.

Every new project of ours is a realisation and improvisation based on insights and feedback received from our earlier ones. We are engaged with the people for whom we build homes and create communities with.

Through our sustained efforts, committed to our core values and aware of the rapid changes that impact our work, we aspire to be one of the leaders in green business in India and inspire change in the way people live.



Regenerative Agriculture

To reverse global climate change and revive ecosystems, GoodEarth took to regenerative agriculture.

Holistic Water Management

Water, its conservation and efficient management has always been the core at GoodEarth.

Community

Building vibrant spaces for people in tune with nature and a thriving habitat for birds, animals, butterflies, insects...

Regenerative Agriculture

60+
Acres

Sustainability has been the core of GoodEarth, but now with global climate change, a hard reality, there's a dire need to shift towards regeneration and work towards reversing global climate change.

Even as creating safe and sustainable communities for people to live in and grow has been our responsibility, tending the soil is too. We practise holistic farming in our own farms spread over 60+ acres across Karnataka and Kerala and also collaborate with farmers who care for the soil.

We grow different types of crops - from vegetables, tubers, fruits, and

as many as 15 different varieties of paddy in our farms in Sulivara (Bangalore) and Muthanga (Wayanad), millets, pulses, oil seeds, spices, sugarcane etc through our five farms in Doddabele, Sulivara and Maddur in Karnataka, Maloor in Kannur and Muthanga in Wayanad spread across 60 acres.

The produce from our farms and other natural farmers is marketed through our retail store Petrichor in GoodEarth Malhar, Bangalore.

We, thus, invite you to join us in our journey towards not only a sustainable but also a regenerative future.

Holistic Water Management

Water crisis being the reality, urban centres being water-centric has become the need of the hour. And at GoodEarth we actively work on roof rainwater capture, reuse of treated water, low flow fixtures and both dry and live mulching.

Water has been the focal point in the creation of Malhar Eco-village.

Greater thrust was laid on treating waste water and rainwater

harvesting. Treating waste water was used for irrigation and flushing. Use of water saving fixtures was another component in minimising water use.

Retaining the natural contours of water bodies in the vicinity, grey water recycling, rainwater harvesting scientifically and economising water use through fixtures contributed to efficient water use.



The two most crucial interventions in this regard at Malhar have been shallow and deep recharge.

The study and scientific interventions through shallow and deep recharge showed how Malhar as a community could effectively recharge the aquifers thus benefitting not only Malhar but the local region as a whole.

Not limiting to our own communities alone, we have revived and restored two urban lakes i.e Anchepalya and Hebbagodi lakes. We ensured the natural edges were retained thereby creating a robust lake ecosystem.

Community

At GoodEarth we build spaces where people thrive, live wholly, are like-minded, share their dreams, talents and aspirations towards nurturing a sustainable environment.

Building sustainable communities that are environmentally sensitive, economically sensible and socially secure has been the driving force at GoodEarth.



We ask deep questions about spaces we live in, seek to understand how well we can live in union with the nature and the environment. We are a pioneer in the field of alternative architecture and environment-friendly development.

We have over 125 acres of green development, built over 1,000 homes, over 100 institutional projects – schools, healthcare and tourism – planted more than 5000 plants and trees of 500 species.



An aerial photograph of the Malhar Eco-village, showing a cluster of houses with red-tiled roofs interspersed with lush green trees and vegetation. The perspective is from directly above, looking down on the community.

malhar

Eco-village

INITIATED IN

2011

GoodEarth's Malhar Eco-village a community spread across 50 acres comprising 600 families and six communities, with one on-going project, is built against the background of water conservation with wetlands, wooded areas, indigenous trees and plants ensuring a vibrant ecosystem that is deep.

The spaces in the community are well-crafted, practical and built resonating the needs and aspirations of the people. The architecture sensitive to the flow of light and air allows for a gentle and playful transition from the interiors of the homes to outward spaces.

Malhar is a thriving ecosystem with over 500 species of plants and trees, hundred plus birds, bees...

Totally, 144 birds have been recorded at Malhar, including winter visitors such as Indian Pitta, Indian Paradise Fly Catcher, Red Naped Ibis, Grey wagtail. Uncommon sightings of Red avadavat, Verditer Flycatcher, Blue-bearded bee-eater.

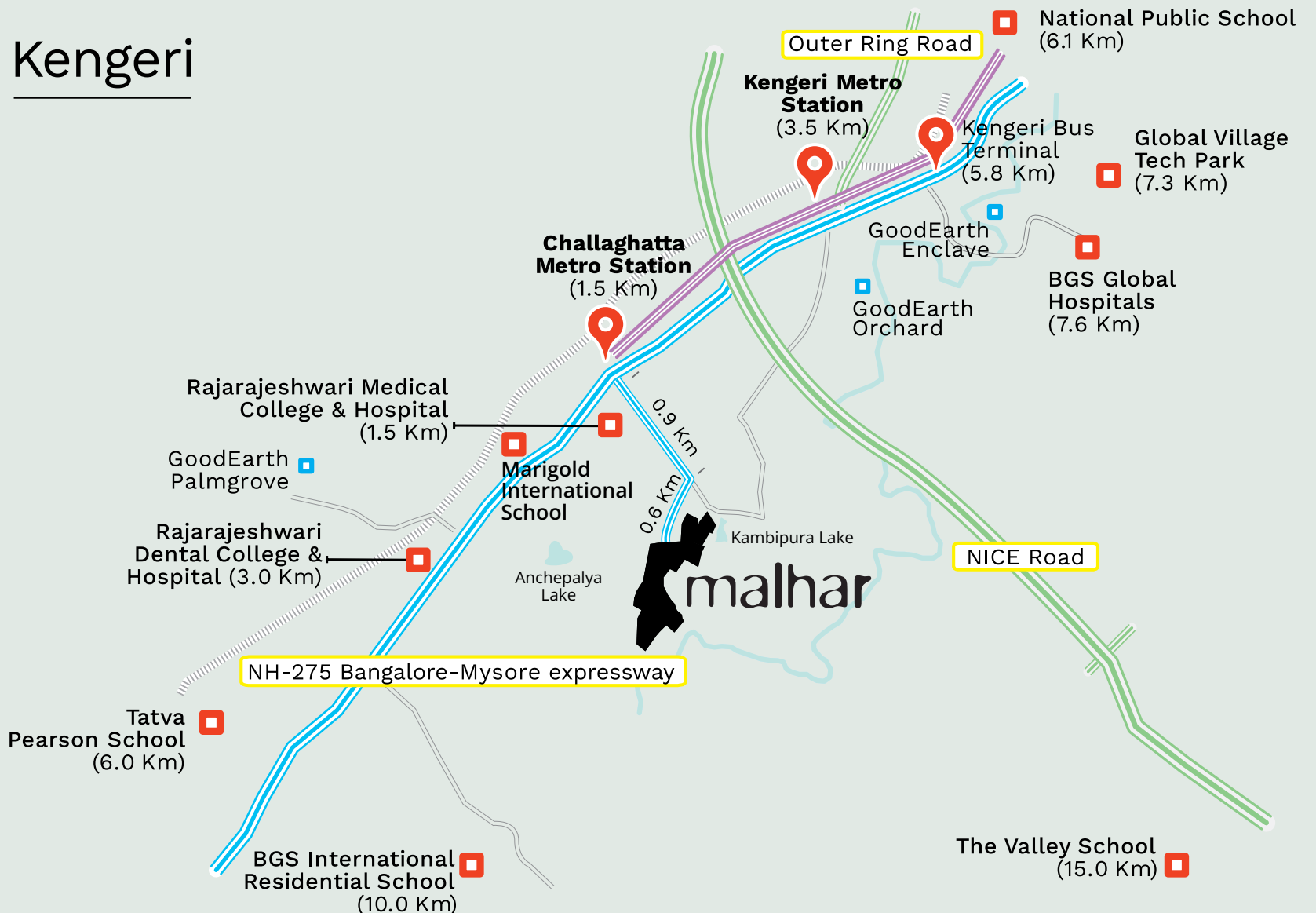


Location

Bangalore



Kengeri



* Pin position not to scale

malhar

Eco-village

Towards
Mysore Road

MOTIF
Ongoing

MEDLEY
Completed in 2022

Petrichor
organic store

Tarana
Courtyard Koota

FOOTPRINTS
Completed in 2014

Towards
Mysore Road

RESONANCE
Completed in 2015

TERRACES
Completed in 2016

MOSAIC
Completed in 2016

Confluence
Sports Club

ADDA Coffee shop
Convenience Store

PATTERNS
Completed in 2019

Anju Bobby Sports
Foundation (ABSF)



TOTAL BUILT
UP AREA

13,50,000
SQ.FT.

LAND AREA

50 ACRES

COMMUNITIES

7

FAMILIES

600

Amenities in & around Malhar



Petrichor Organic Store

A one stop shop for your groceries, fresh fruits and vegetables locally sourced.



Bayleaf Café

A cozy neighbourhood cafe serving baked in-house breads and wood-fired pizzas



Courtyard Koota

A place to express your creative side.



Adda Coffee Shop

Take a quick bite and sip hot coffee/chai.



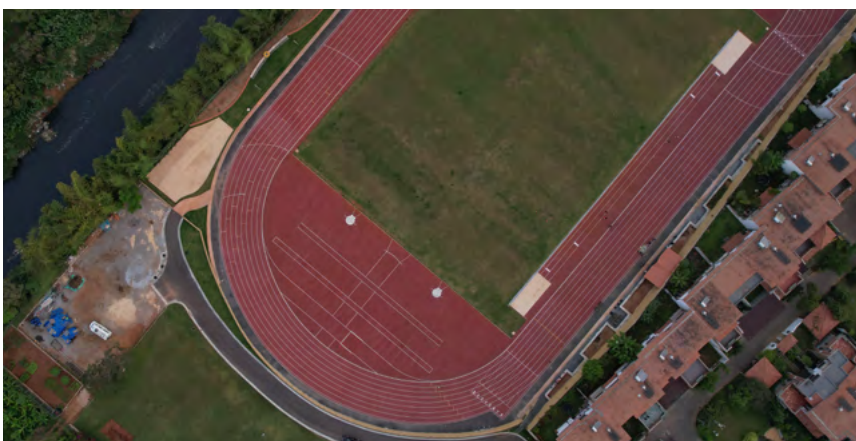
Tarana

GoodEarth's office space also offers co-working spaces, nestled in nature.



Pre-School

A school for children between one-and-a-half years and seven years.



Anju Bobby Sports Foundation

Train to achieve excellence in athletics.



Convenience store

Supermarket to meet all your daily needs.

Confluence Club

Confluence Club is an exclusive sports club at Malhar. Comprising state-of-the-art indoor badminton court, swimming pool, gymnasium, football ground with professionals training in various sports and squash courts, the Confluence Club stresses on a healthy way of life.

The entry to the club is based on membership.

The Club has guest rooms and a Café – Bayleaf in its premises along with a wellness centre, multi-purpose halls.

Bayleaf Café

Guest rooms

Swimming pool

Wellness centre

Gymnasium

Football ground

Badminton courts

Multi-purpose hall

Conference hall

Squash court

Snooker



Features of Malhar Eco-village

Sustainability drives GoodEarth's design and choice of materials thus forging a relationship with the environment for life. We use a combination of the modern and the traditional in our materials, techniques and details, creating a unique aesthetic that has a global flavour while being decidedly Indian.

We integrate traditional crafts into our designs for their inherent value and to promote skilled craftsmen.



CRAFT

Traditional crafts like carpentry, stonework and masonry are dying a slow death as they cannot adapt to newer material, technology and requirements. But the value they impart to a space cannot be overlooked.

We, thus, make a conscious effort to integrate these crafts and skilled craftsmen in the building process. In all our work, we emphasise human resource rather than material.



MATERIAL

We choose our materials based on local availability, efficiency of manufacturing processes and durability. Natural materials exude peace, warmth and age beautifully. We use recycled materials wherever possible and always use resources optimally.

Stone:

A locally available material, stone has excellent insulating properties and aesthetic beauty. Today building with stone is a craft that's slowly disappearing due to our increased dependence on factory-made synthetic materials. We, therefore, need to revive its use.

Earth blocks:

Soil excavated from foundations, basements, tanks and water bodies is stabilised using a small percentage of cement and moulded into blocks. We use resources from the site, thereby, reducing the amount of materials being transported in. These blocks are

specifically designed for the structure and quality control is done on-site. Besides being engineered for strength and durability, walls made of stabilised mud blocks are aesthetically pleasing when detailed well.





ENERGY


Design for natural light & ventilation:

All the homes have been designed with adequate natural light and cross ventilation. Large windows, wide verandahs, air channels for circulation, and thermally conductive materials are all features which reduce the necessity for artificial light and ventilation.

The use of solar energy for lighting and water heaters is an important part of Malhar's ethos. Provisions for connecting solar water heaters and photo-voltaic panels for power will be made on the roof and their use would mean lowered power consumption and greater savings on your energy bills.

In Motif each of the houses has been provided with a 3kW PV solar panel.

You will be the proud resident of an energy efficient home.



Paints:

We only use paints that are non-toxic, lead-free and low in VOC. Volatile Organic Compounds (VOC), commonly found in most indoor and outdoor paints, give out low-level toxic emissions into the air for years after application. Lower VOC paints preserve both the indoor and outdoor air quality of your home and help your family breathe easy.



Wood:

At Malhar, wood is more than just an aesthetic source. To promote its use as a renewable resource, we intend to plant timber species within the community. A warm, intimate material, it replaces high energy consuming steel and aluminium (typically used for doors and windows). We believe in recycling old timber—from houses that are demolished, from packing cases, and from plantation timber—as opposed to forest timber.

Flooring:

We use a combination of natural materials— wood, stone and clay—as well as vitrified tiles, depending on the location of the flooring. Natural materials age gracefully and are used in living spaces while the synthetic tiles are used in areas that need to be cleaned on a daily basis.





WATER

Rainwater harvesting and recharging:

At Malhar eco-village, true to its name, rainwater conservation takes on a special significance. Rainwater is harvested and the ground water is recharged through well spread out percolation channels across the development. Roof water will also be channelled through pipes, passed through a series of filters and collected in the water tank. With intermittent rains in Bangalore, this supplements the supply through bore wells.



ECOSCAPE

Integrating ecology with landscape: Creating an environment for the land to rejuvenate becomes an important aspect of planning, especially for the psychological and cultural values they impart.

Trees and plants will be mostly local, hardy and of a variety that can withstand low water conditions. The environment will be interactive and engaging, and Malhar will be a veritable encyclopaedia of plants and trees including the medicinal variety which have been sourced and carefully adapted from far and wide.

This flora further serves as a habitat for fauna which has groomed the enthusiasm of the residents' wildlife and birdwatchers' groups.

As your children discover insects and birds, climb trees and create imaginative worlds in the nooks and corners of Malhar, relive your childhood. Experience the change in seasons as expressed through the flowering and shedding of the trees.



Interiors

At GoodEarth we provide interiors as an added service.

GoodEarth Interiors, a way of creating interior spaces that are functional, beautiful, and sustainable.

We believe architectural and interior designs are neither separate disciplines nor separate tasks. Both should be developed together and with equal emphasis.

We follow a modern classic style of interiors with an earthy palette of materials. This complements the

vernacular exterior style and construction of GoodEarth homes.

This aesthetic approach is adapted to suit the client's requirements, their lifestyle and preferences, creating living spaces that have a timeless feel to them

We work closely with skilled craftsmen to bring the designs to life. Each detail is carefully honed and all aspects of the execution phase are closely monitored to ensure that the different interior elements fit well with each other.

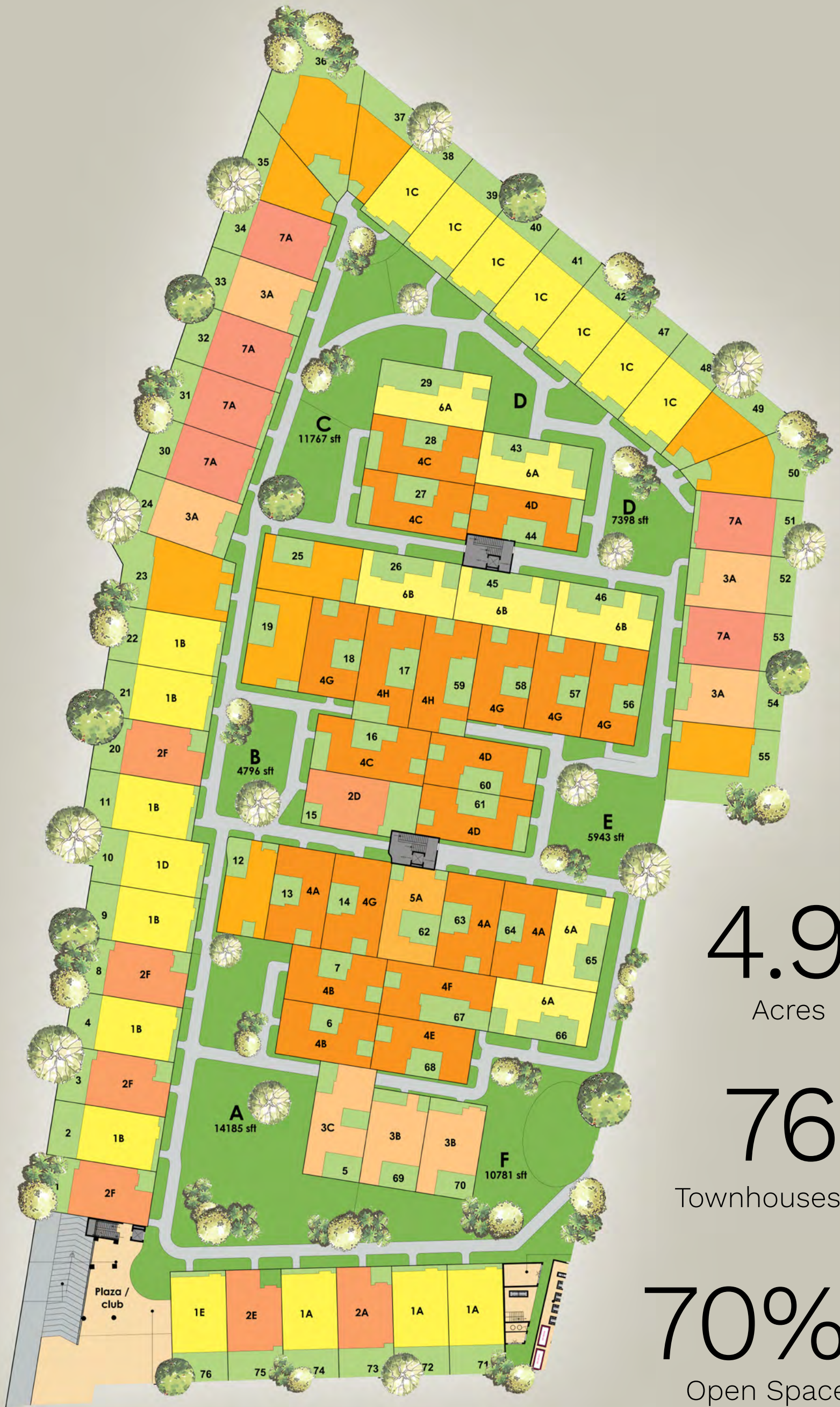
Malhar Motif

The on-going Malhar Motif is the seventh community of Malhar Eco-village. Motif which offers 76 town houses on 4.9 acres and has 70% open space imbibes the ethos of GoodEarth and the Malhar Eco-village of which it is a part.

Motif, the new upcoming community, shall continue to be a water-centric community. A sustainable community with contemporary

homes, it's a perfect meld of both the worlds. Experience crafted and functional environs with generous living areas with an array of amenities in the GoodEarth Malhar community.

Inner spaces in the houses are thoughtfully planned with ample use of sustainable materials. The spaces are free flowing where in children can cycle, skate around uninterrupted...



4.9
Acres

76
Townhouses

70%
Open Space



Discover a
green & serene
community

A car-free community



Child first community

Parents know a lot but grandparents know everything.

Spaces are created in the community keeping in mind all its residents, more so the children and the elderly. Finer details and designing of spaces encourages children to explore, gives free rein to their imagination, boosts

playfulness and at the same time ensures safety. For the elderly, the spaces are welcoming, safe and also strengthens their belongingness in the community.

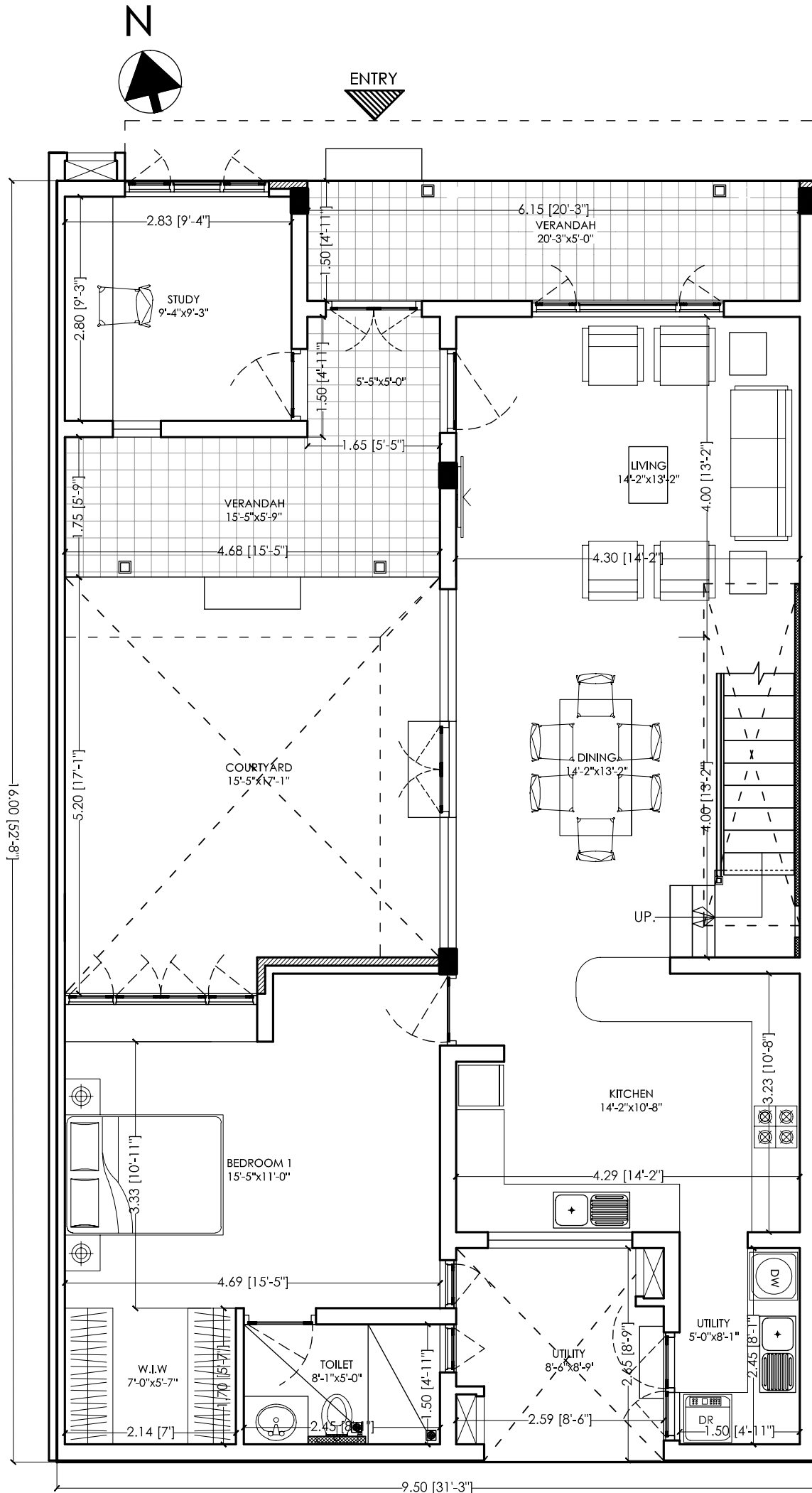


Garden Courtyard Homes

The garden courtyard home is sculpted around an open to sky garden, reminiscent of the “aangans” of traditional homes. This garden space is enveloped on either two or three sides by verandahs and windows that overlook it. It provides light and ventilation to the entire house. Most of the spaces are oriented to this courtyard.

Ground Floor Plan

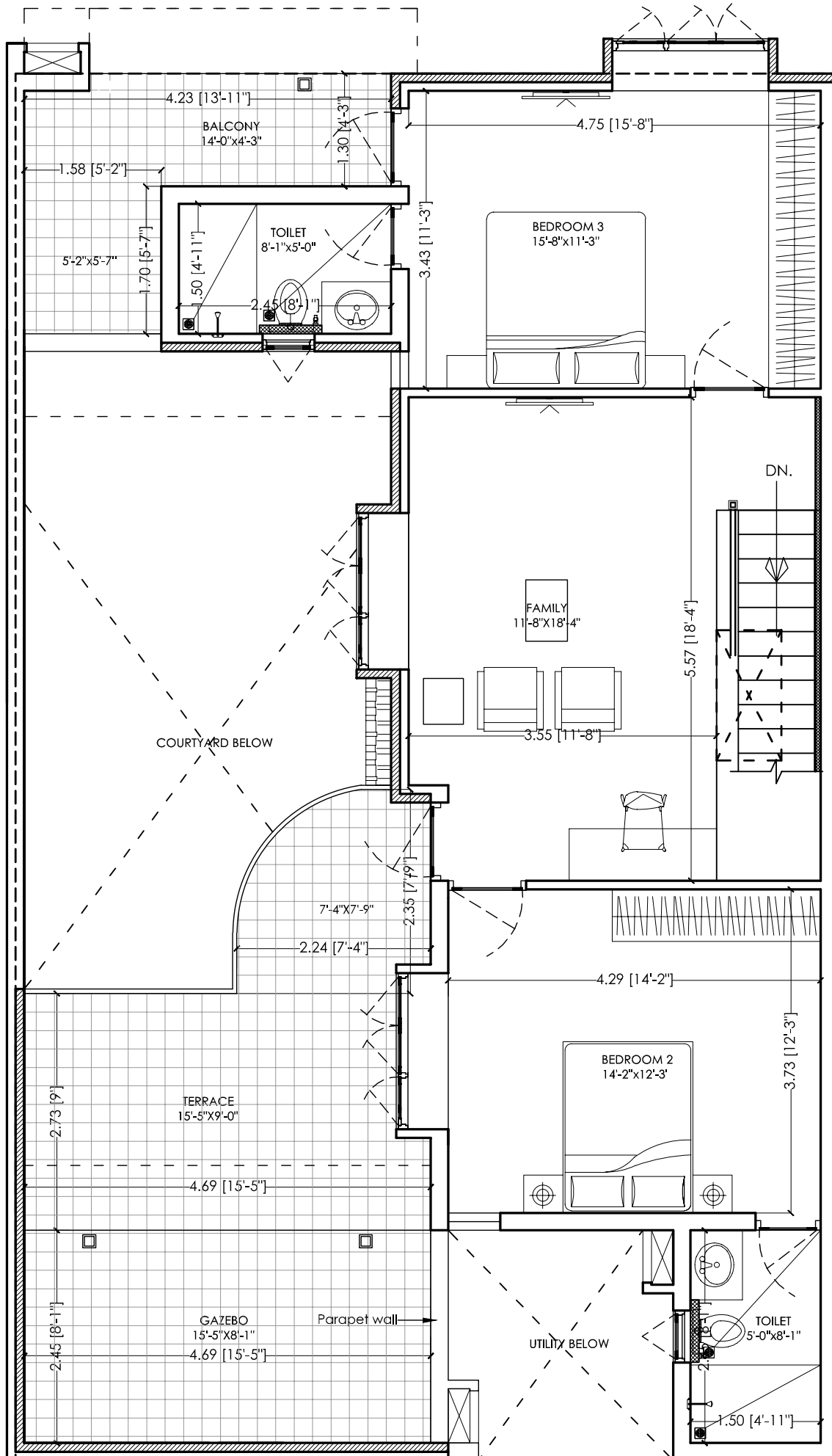
Garden Courtyard Homes



Type 3 + Study

First Floor Plan

Total Built up area	222.60 Sq.m
Total Carpet area	148.95 Sq.m
Courtyard	30.21 Sq.m



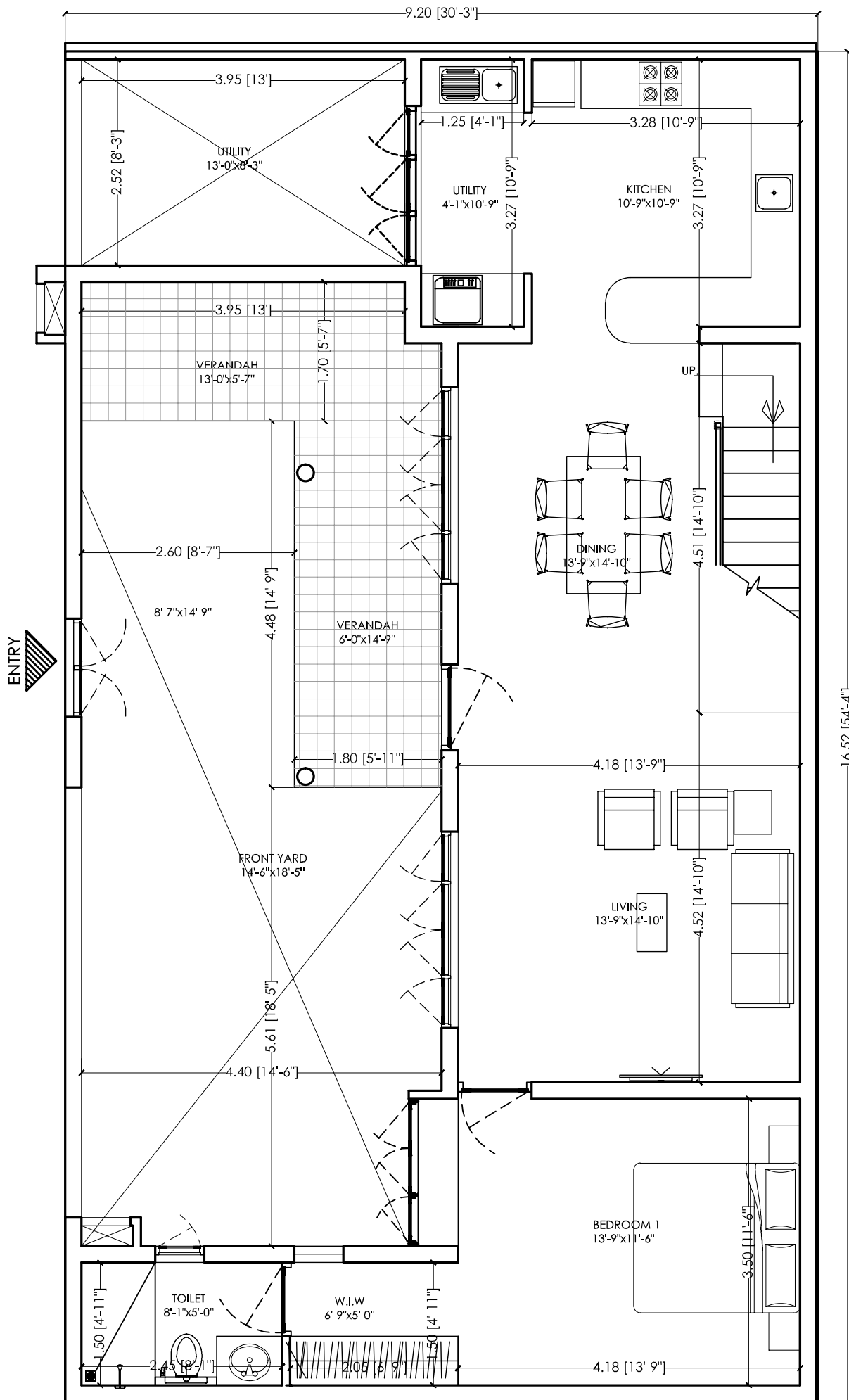


Garden Homes

The spaces within this house flow seamlessly from the entrance verandah through the living and dining areas to the rear verandah and into the rear garden. The spaces are interconnected with minimum walls, with a staircase leading to the first floor.

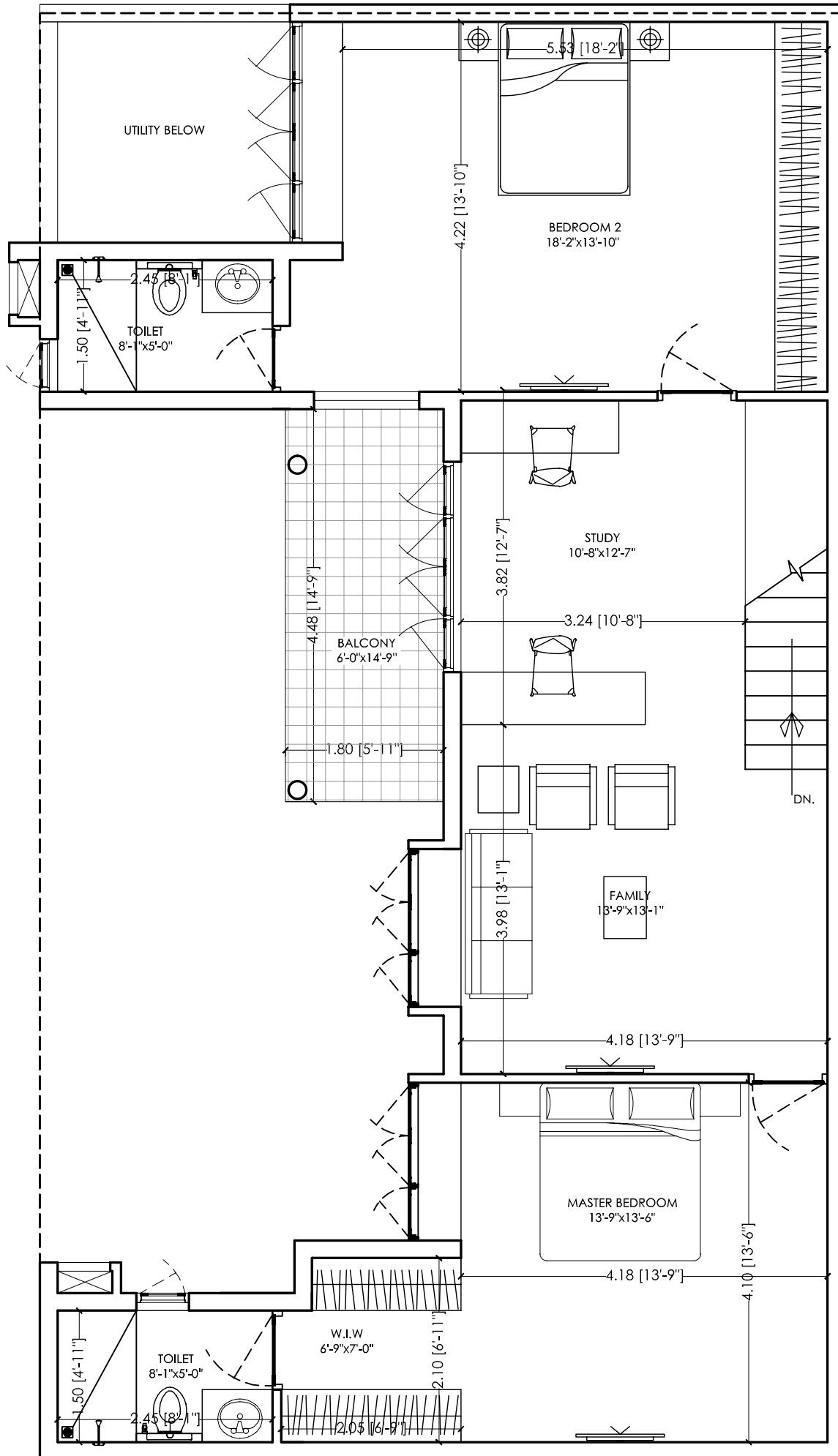
Ground Floor Plan

Garden Homes



First Floor Plan

Total Built up area	212.28 Sq.m
Total Carpet area	158.28 Sq.m
Frontyard	36.29 Sq.m
Courtyard	10.43 Sq.m



Specifications

INFRASTRUCTURE

Internal roads: Concrete pathway and stone walkways.

External compound wall: Layout will be surrounded with a solid 6 feet compound wall.

Water supply: Central pressurised water supply from bore wells and sumps.

Electricity: Underground cables with individual meters. Common lighting for pathways, parks and basements.

Telephone/Internet: Underground conduit provisions for telephone and broadband Internet to each house.

Landscape: All common areas will be landscaped with trees and parks.

Community hall: Community Hall with space for parties and functions.

STRUCTURE

Foundation: Combination of stone foundation/pile foundation and RCC frame.

Super structure: Load bearing masonry walls in exposed stabilized mud blocks or wire cut bricks.

Roof & slabs: Reinforced cement concrete slabs.

Interior walls: Cement plastered.

FINISHES

Exterior finishes: Walls—combination of painted and exposed wire-cut bricks or stabilized mud blocks pointed.

Interior finishes: Walls plastered and painted with distemper.

WOODWORK

- Front door: Seasoned teakwood, artistically designed, fully panelled.
- Internal doors: Seasoned hardwood, fully panelled, finished with clear polish.
- Windows: Seasoned hardwood, clear glass (except for toilets), finished with cashew oil.
- Grills: Mild steel grills as per design, painted with primer and semi-gloss paint.
- Hardware: A combination of brass and powder coated fittings and branded locks.

ELECTRICAL

- All wiring shall be of Havells or equivalent make concealed in 19/25mm dia, 1mm/2mm thick PVC conduit pipes. Modular switches of Crabtree or equivalent brand.
- Solar Water Provision for all homes in Kitchens only
- Electric Car Charging Provision for Cars

FLOORING

Vitrified or Ceramic tiles with a rustic stone finish of Nitco/Morbi or equivalent brands.

BATHROOMS

Vitrified or Ceramic tiles with a rustic finish of Nitco/Morbi or equivalent brands. Walls in ceramic tiles up to 7 ft ht.

SANITARY FITTINGS

- European wall mounted white closet, Parryware or equivalent make.
- CP fittings of Jaguar or equivalent make and ISI marked concealed PVC or PPR plumbing. Provision for geysers.

KITCHEN

The cabinets, counter, dado, sink and taps are not included. Electrical and plumbing connections will be provided.

malhar Motif

Call us:

+91 77956 88033

Visit our website:

www.malharmotif.com

Rera No: PRM/KA/RERA/1251/310/PR/200922/005259

ASK Finance

Project financed by ASK FINANCE (ASK Financial Holdings Pvt. Ltd.) and mortgaged in favour of Catalyst Trusteeship Ltd. (Trustee on behalf of ASK Finance). The buyer will be required to obtain a no objection certificate from Catalyst Trusteeship Ltd. prior to entering into any agreement for the sale of any unit in the project.